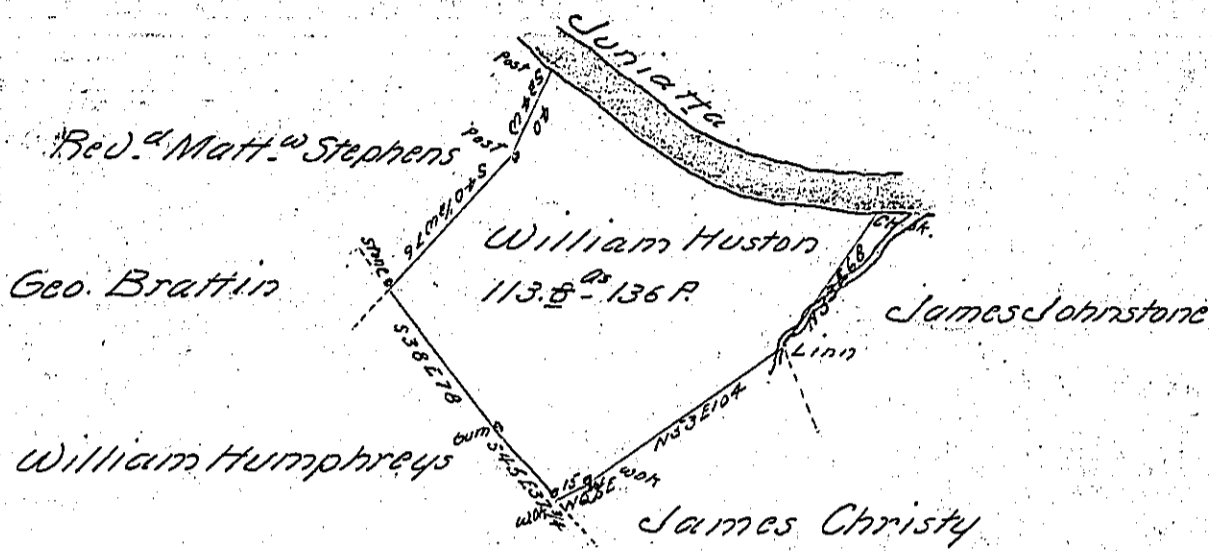


Courses & Distances ~~see~~ up Juniatta

N 80 1/2 W 76
N 57 W 80 1/2



Draught of a tract of land Situate in Wayne township Cumberland
 County Containing one hundred thirteen acres ^{136 P.} ~~and~~ & the usual allowance
 of Six P^{ts} Cent for roads &c.^a Surveyed for William Huston May 2^d 1787
 in pursuance of a Warrant from the Honorable Vice President of the
 Supreme Executive Council Dated Feb^y 28th 1787

Sam^l Lyon D.S.

John Lukens Esq^r }

Surv^r Gen^l }

now Mifflin Co^y

IN TESTIMONY that the above is a copy of the original remaining on file in
 the Department of Internal Affairs of Pennsylvania, made
 conformably to an Act of Assembly approved the 16th day of
 February, 1833, I have hereunto set my Hand and caused
 the Seal of said Department to be affixed at Harrisburg,
 this second day of February 1904

George B. Brown
 Secretary of Internal Affairs